



NUOVACMM
welding automation

since 1974





NUOVACMM
welding automation



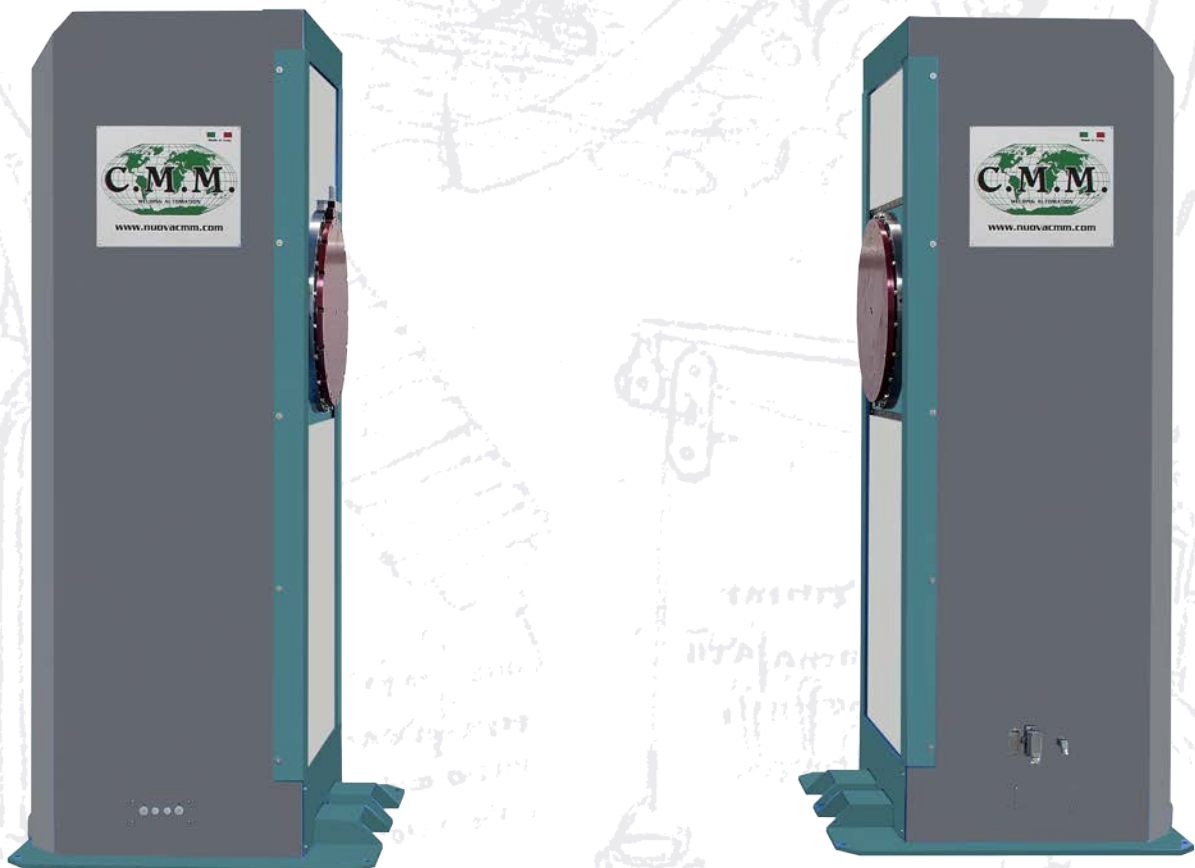
NuovaCMM. Una storia italiana.

Pudant excest omniand emporum, omnitat eicatib usamus dolupta tu-
rentusam ium et evelesti saeped magnati a quia voluptisciae officiet hil maios
nis ex expersp erciur sin noneser natibus, officti ut molesequi beation ped utendun
tiaspedist, quo offic te re pa con nam quidus ut ut molvides nihitem porrunt occat.

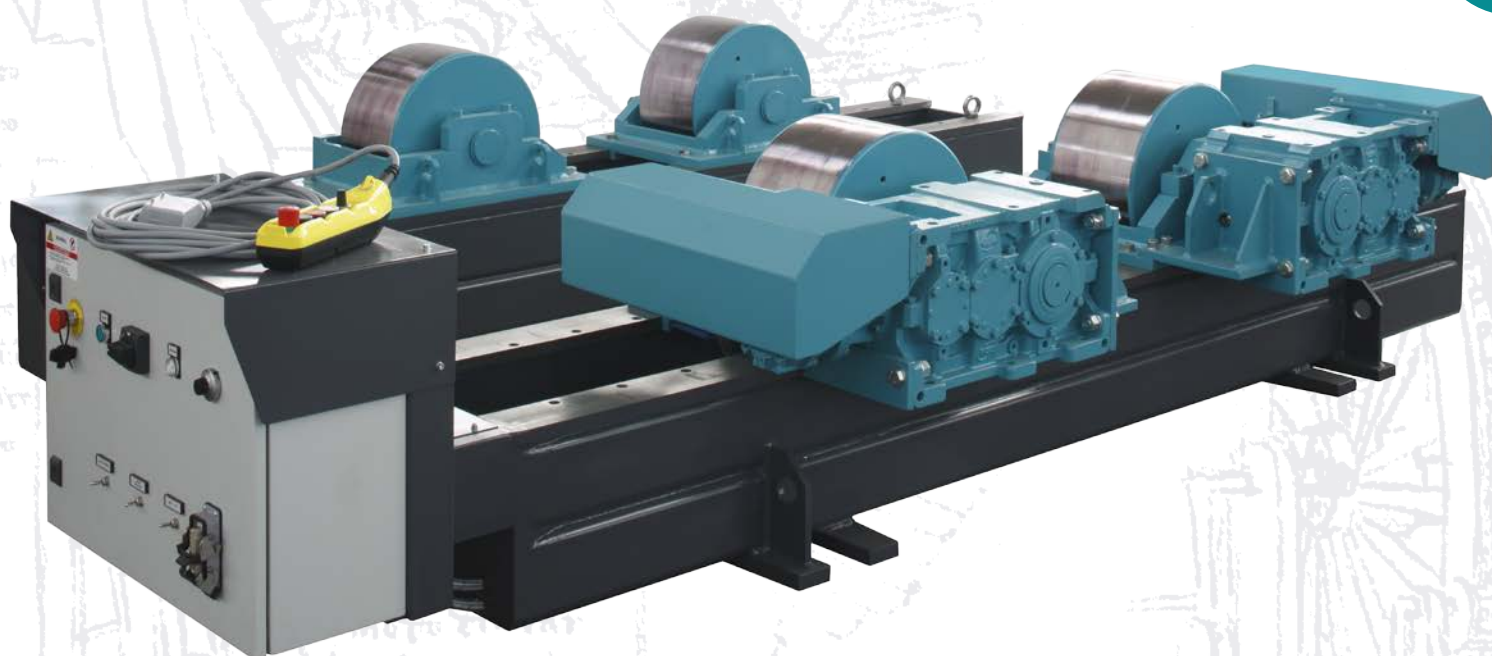
Enimil et abor moluptatis est faccaep ernatianti od quamusto escias solest latio. Eque volupit ex
nimendi asi reses am re dolor aut id magnam reped qui apere venimporum faccula serehendi occae,
temolor ibusam nulles que praturiaata ipic tecepud aesequiaest, offic temporrum niae velit, sit pernam,
natiatiissum autatas et et dolupta sperum et reses et liquam simagna tureribus volutatemque ducia
sectoreped quiaspe riassin expliquisit vel imus aute vendem sinciis inctio. Consendi oditatus reicae.



4



WRB Line

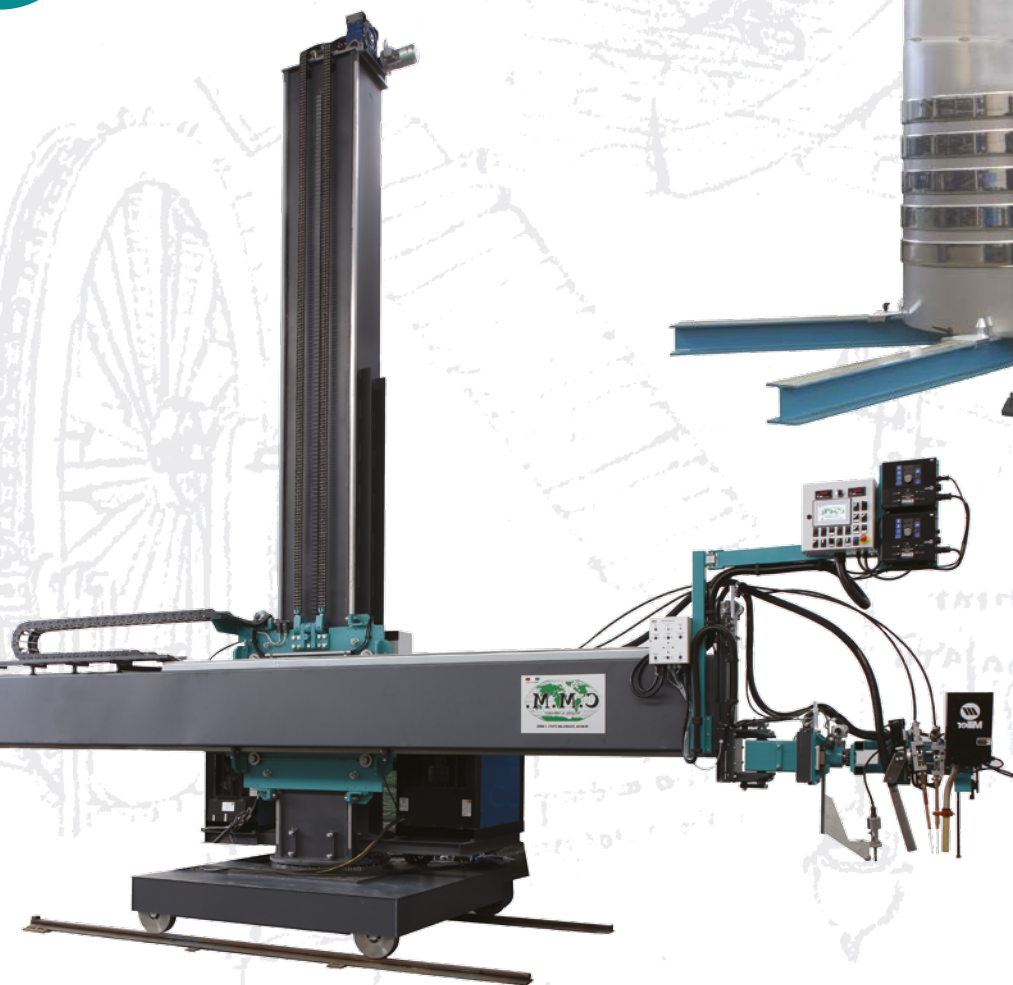


5

NUOVACMM
welding automation

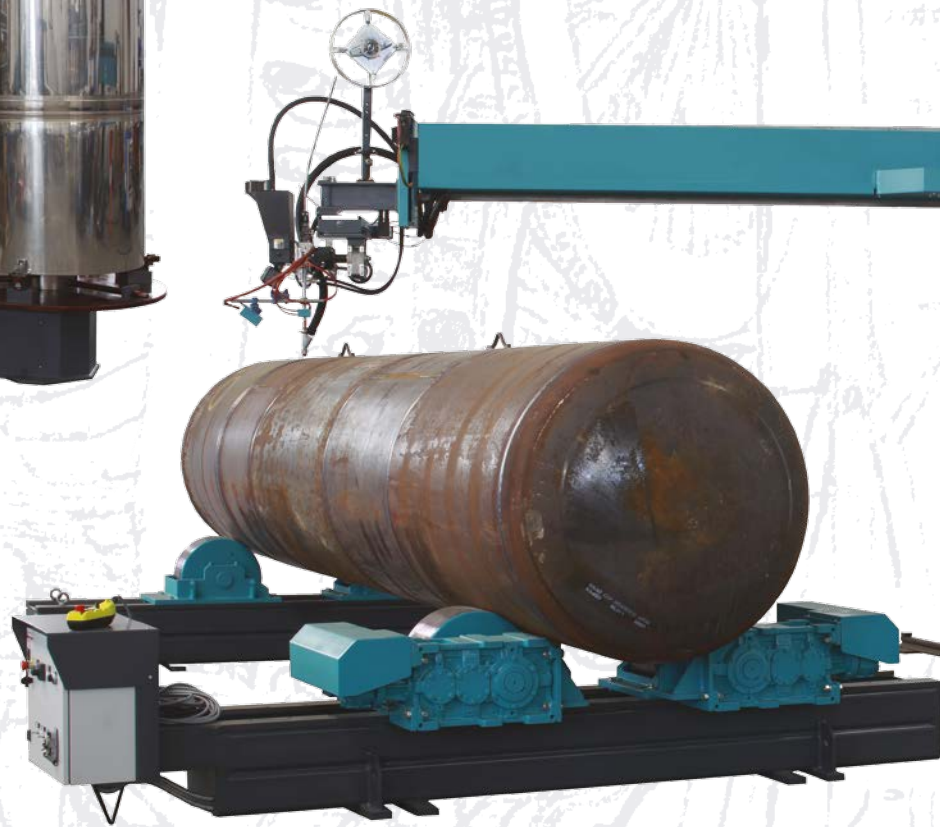


6





NUOVACMM
welding automation



8

NUOVACMM
welding automation





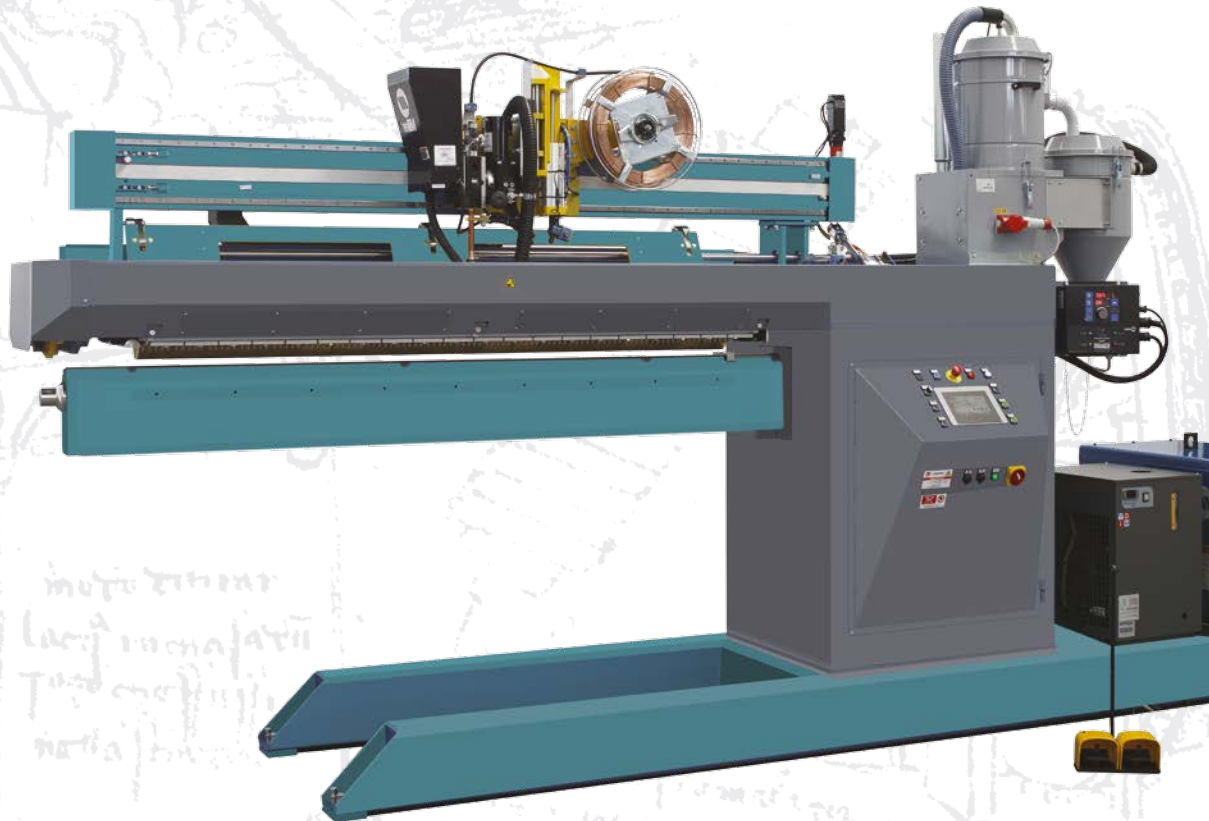


SW 4.2

10



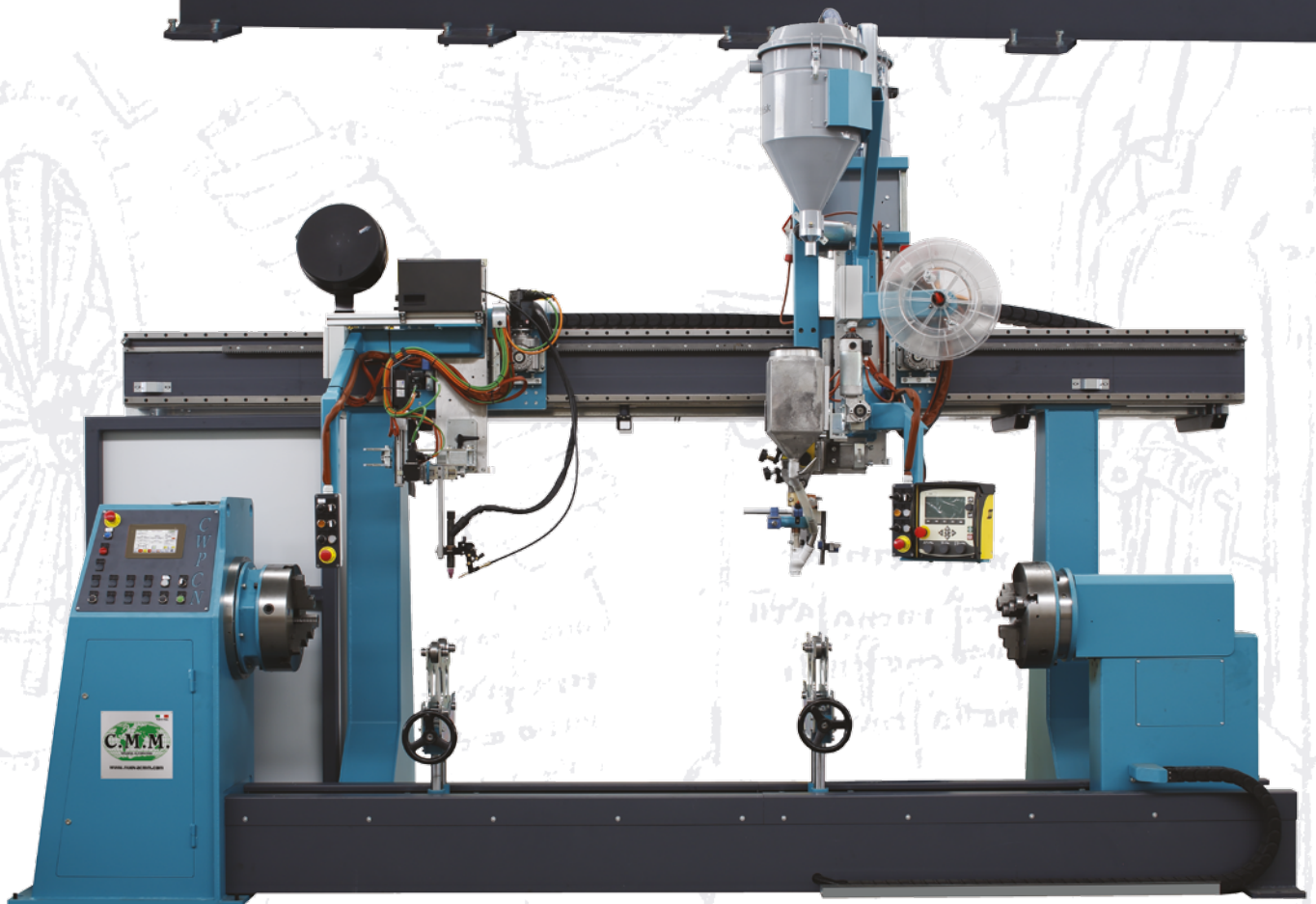
SW 1.0



NUOVACMM
welding automation



12





NUOVACMM
welding automation

SPECIAL Solutions

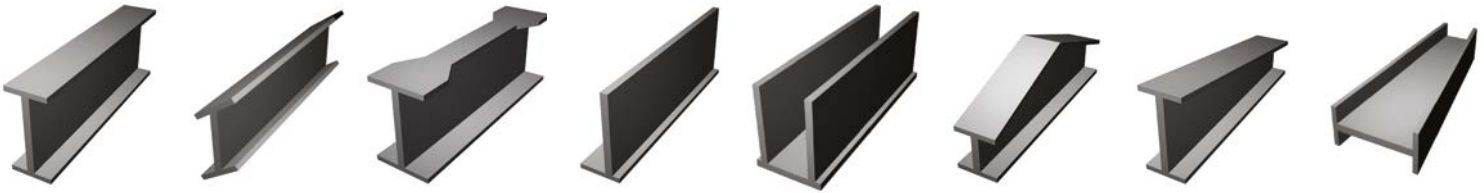


14

ROBO Line

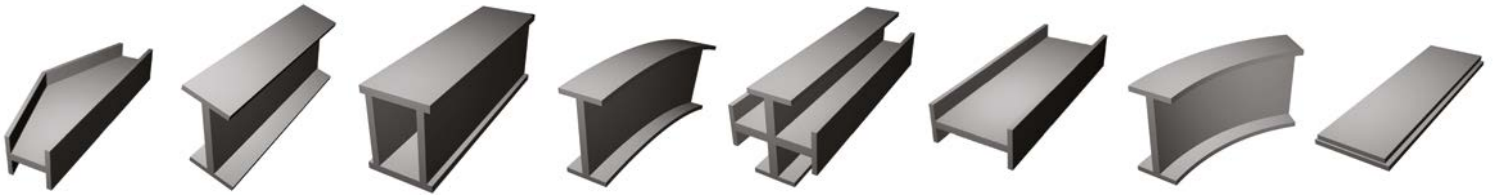


NUOVACMM
welding automation



Pudant excest omniand emporum, omnitat eicatib
usamus dolupta turentusam ium et evelesti saeped
magnati a quia voluptisciae officiet hil maios nis ex
expersp erciur sin noneser natibus, officti ut molese-
qui beation ped utendun tiaspedist, quo offic te re pa
con nam quidus ut ut molvides nihitem porrunt occat.

NUOVACMM
welding automation



Wide range of section

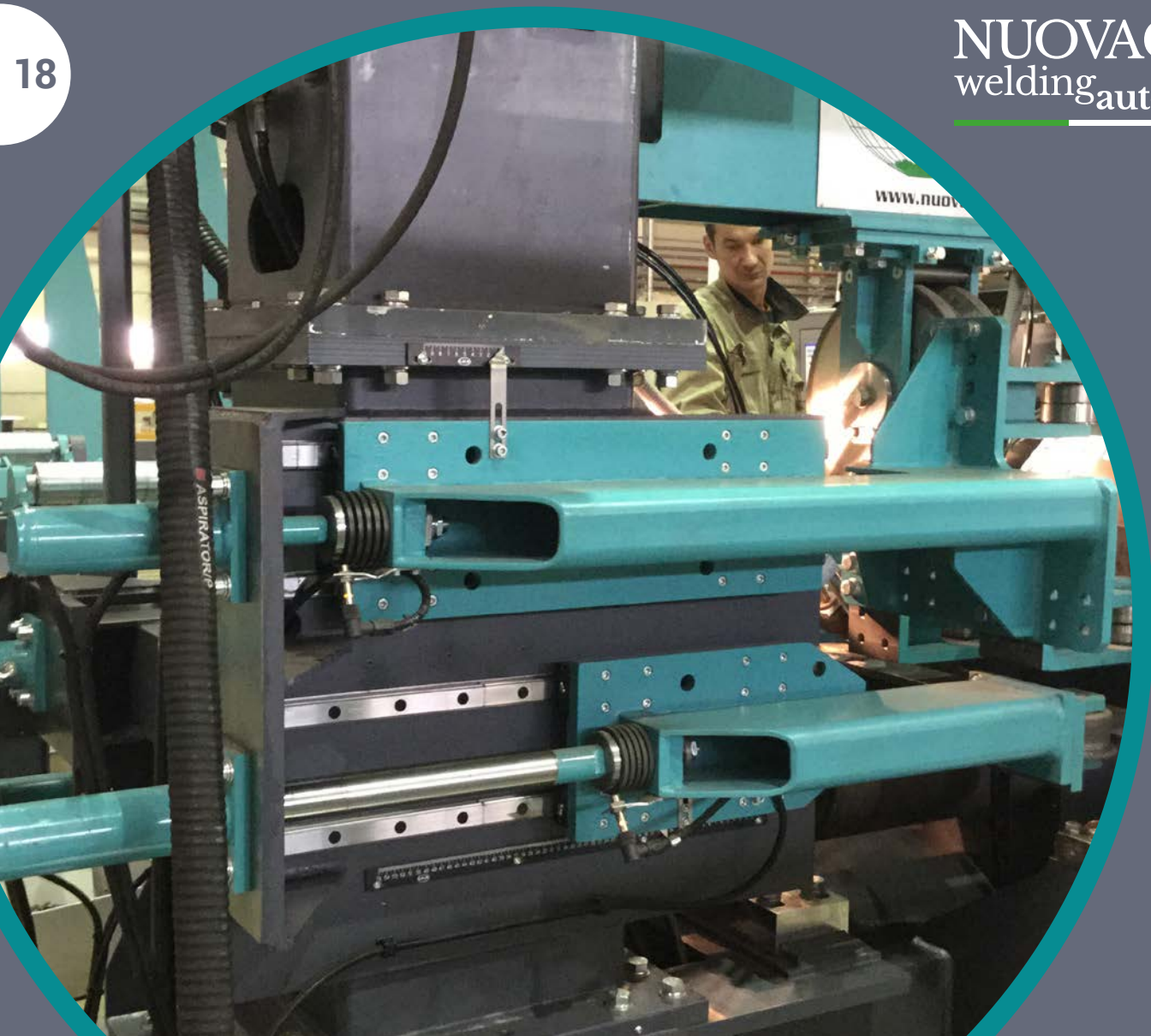
Pudant excest omniand emporum, omnitat eicatib
usamus dolupta turentusam ium et evelesti saeped
magnati a quia voluptisciae officiet hil maios nis ex
expersp erciur sin noneser natibus, officti ut molese-
qui beation ped utendun tiaspedist, quo offic te re pa
con nam quidus ut ut molvides nihitem porrunt occat.

Beam Welding Line - Light Size



NUOVACMM
welding automation

18





Infeed line



Flange Straightening rolls



Clamping hydraulic cylinder



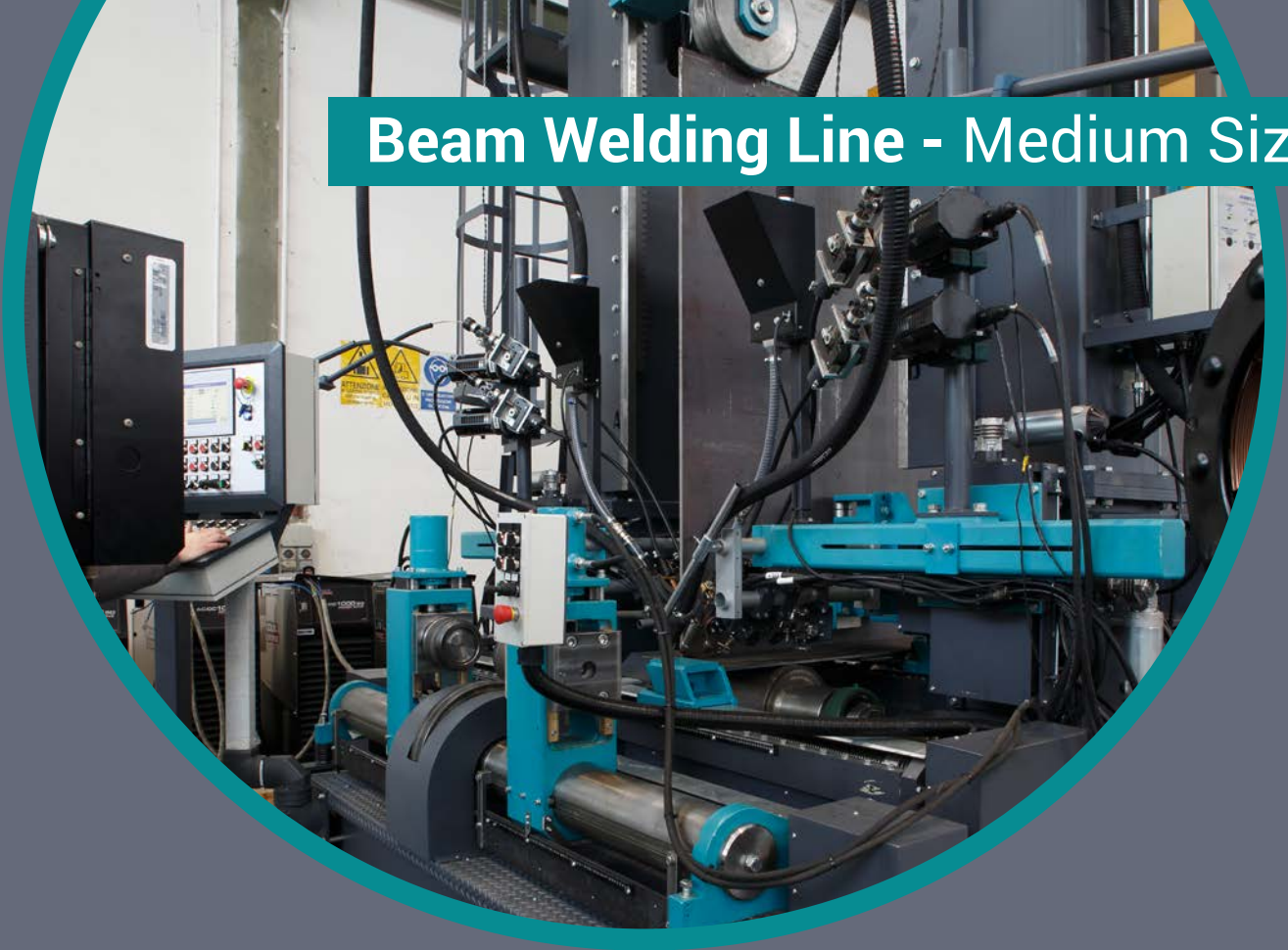
Exit line

Type of Beams



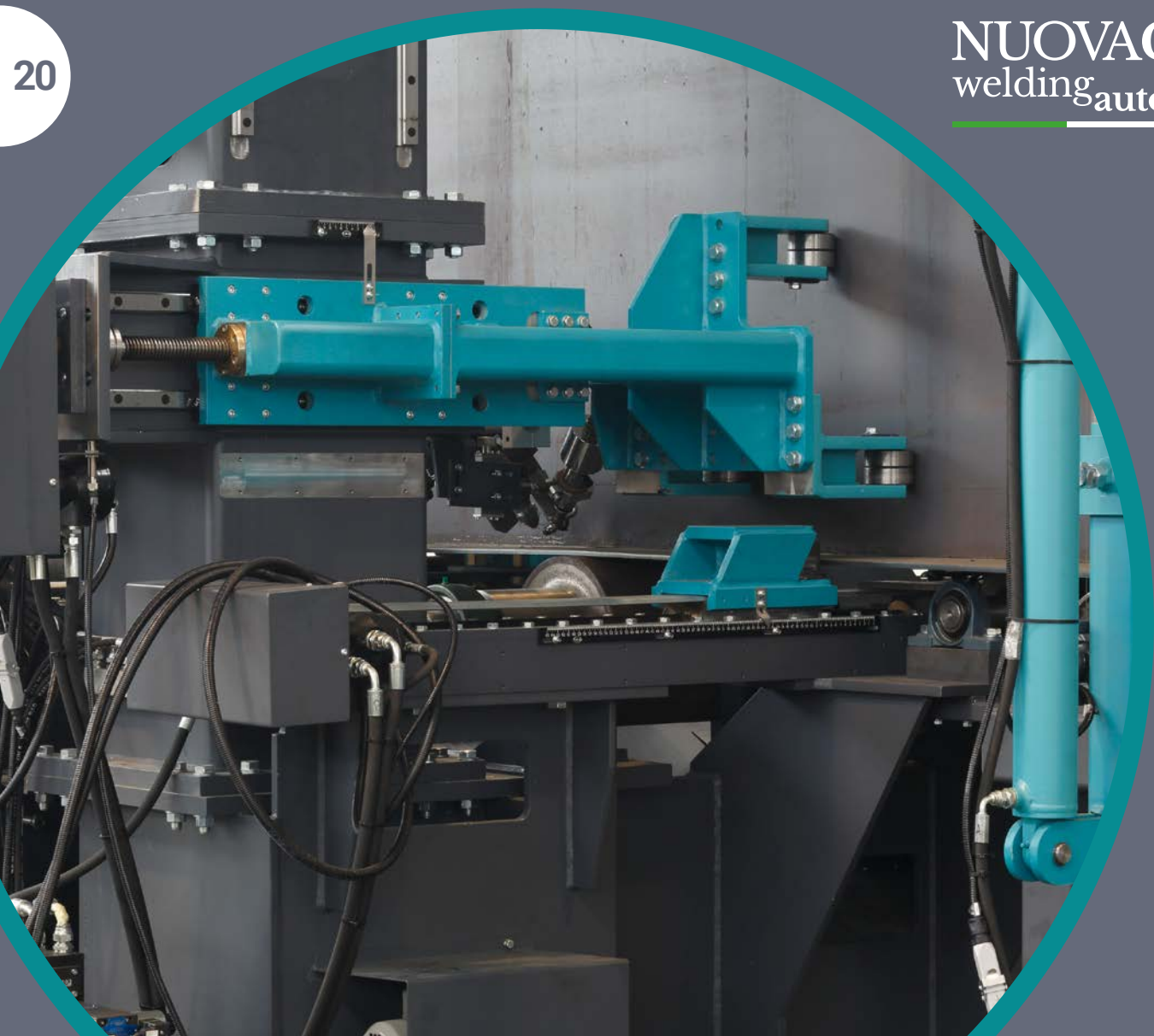
Specifications		min	max
Web height	mm	180	2000
Web thickness	mm	8	25
Flange width	mm	100	1000
Flange thickness	mm	8	50
Weight	Kg/m		up to 1000
Length	mm	2000	up to 25000

Beam Welding Line - Medium Size



NUOVACMM
welding automation

20





Infeed line



Loading with magnets



Clamping motorized traverse



Exit line

Type of Beams



Specifications		min	max
Web height	mm	200	3000
Web thickness	mm	8	30
Flange width	mm	150	1250
Flange thickness	mm	8	50
Weight	Kg/m		up to 2000
Length	mm	2000	up to 45000

Beam Welding Line - Heavy Size



NUOVACMM
welding automation

22





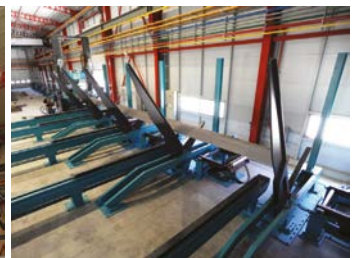
Infeed roll for camber



Infeed line



Clamping motorized traverse



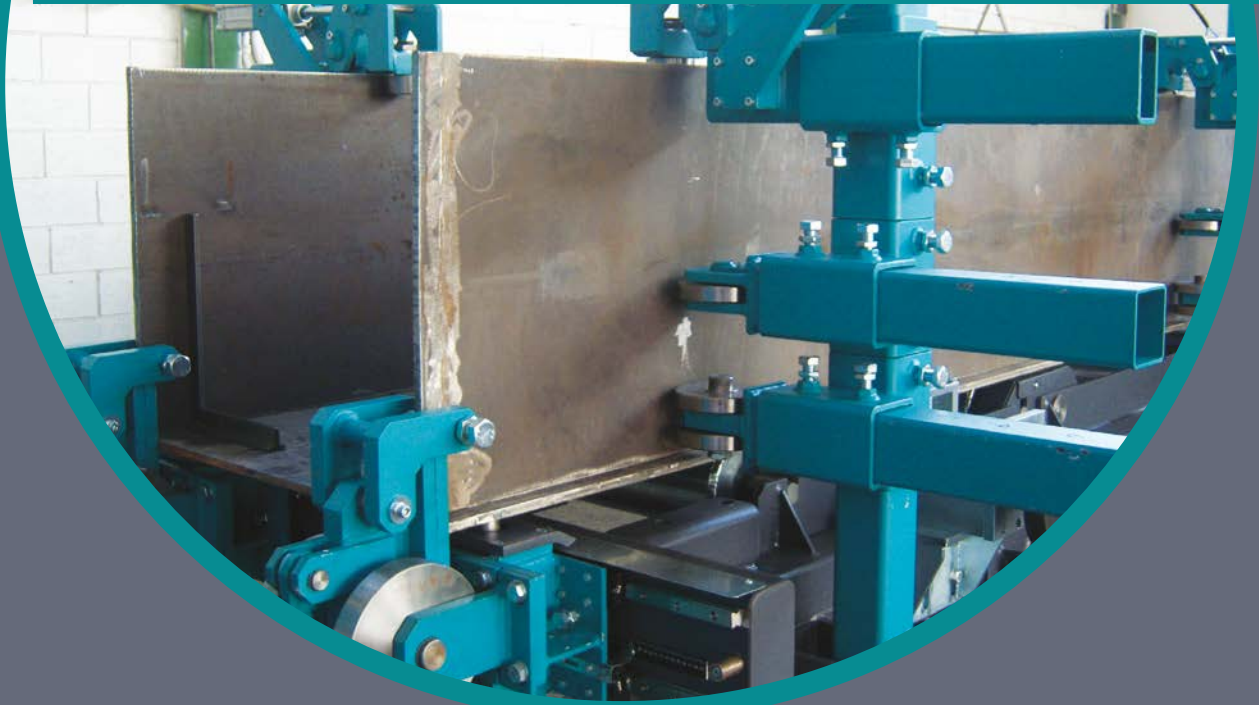
Exit line

Type of Beams



Specifications		min	max
Web height	mm	250	5000
Web thickness	mm	8	50
Flange width	mm	100	2000
Flange thickness	mm	8	100
Weight	Kg/m		up to 3000
Length	mm	2000	up to 45000

Beam Line for Assembly and Welding Box



NUOVACMM
welding automation

24





Tacking is required at the leading edge



Infeed assembly line



Double Edge Tack-welding unit



Guidance and bottom clamping rolls

Type of Beams



Specifications for Beam and Tack-Welded Box		min	max
Web height	mm	200	2500
Web thickness	mm	8	30
Flange width	mm	150	1250
Flange thickness	mm	8	50
Weight	Kg/m		up to 2000
Length	mm	2000	up to 25000

Specifications for Beam Assembled On-line		min	max
Web height	mm	1000	1530
Web thickness	mm	8	30
Flange width	mm	800	1250
Flange thickness	mm	8	50
Weight	Kg/m		up to 2000
Length	mm	2000	up to 25000

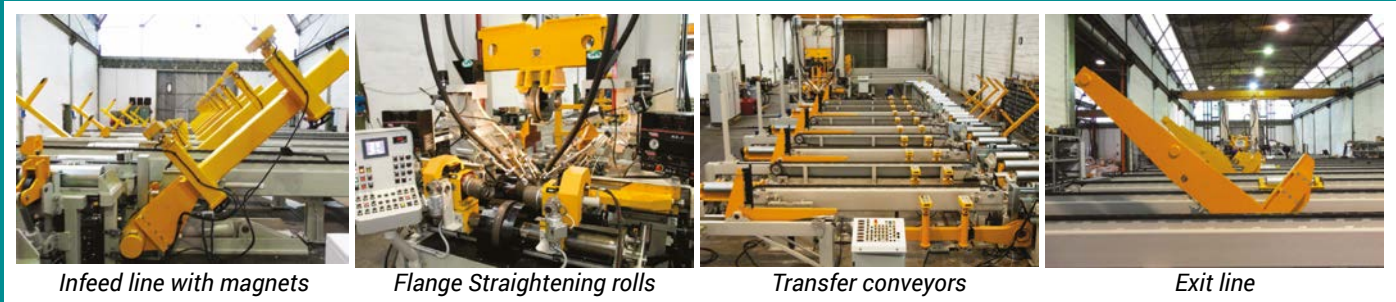
FMS Line



NUOVACMM
welding automation



26



Infeed line with magnets

Flange Straightening rolls

Transfer conveyors

Exit line

Type of Beams



Specifications		min	max
Web height	mm	180	2000
Web thickness	mm	8	25
Flange width	mm	100	1000
Flange thickness	mm	8	50
Weight	Kg/m		up to 1000
Length	mm	2000	up to 16000

BWF Line

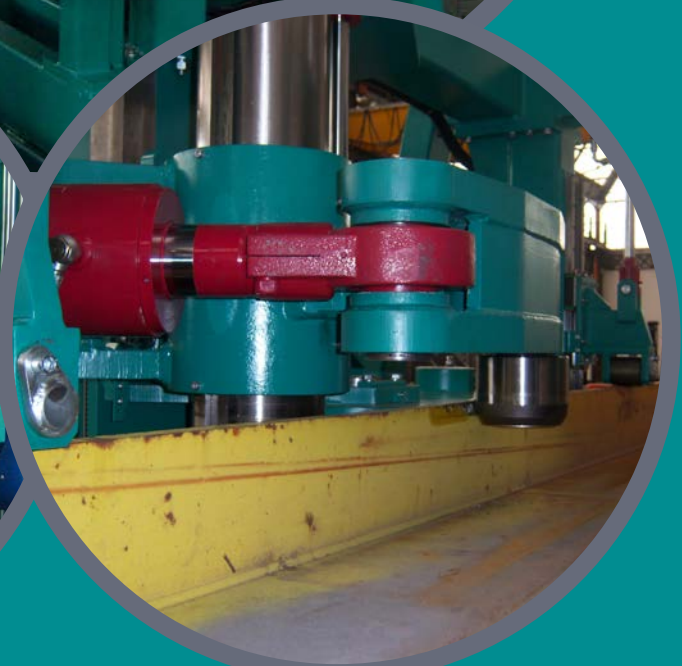


NUOVACMM
welding automation

28



Straightening Machine RHINO



Specifications		min	max
Web height	mm	250	2500
Web thickness	mm	6	30
Flange width	mm	150	800
Flange thickness	mm	6	40
Weight	Kg/m		no limit
Length	mm	2000	no limit

Seam Welder PHOENIX



NUOVACMM
welding automation

30





Accessories

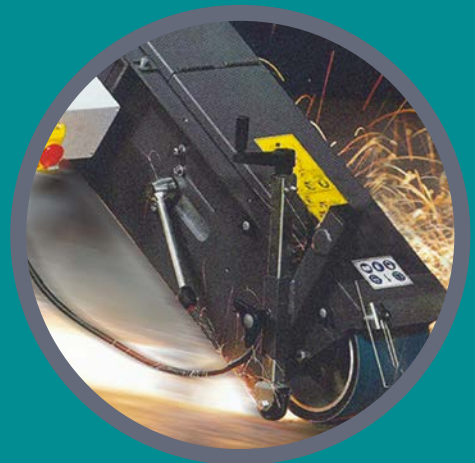
31



Cutting Gantry



Laser Height Control



Grinding Unit

Specifications		min	max
Plates height	mm	1500+1500	6000+18000 (tot. 24000)
Plates thickness	mm	8	100
Plates width	mm	300	5000
Weight	Kg/m		up to 3000

Beam Welding Line for Special Project



NUOVACMM
welding automation



32

Full PLC Line for High Camber "Happy & Sad" with Variable Flange Thickness and Width



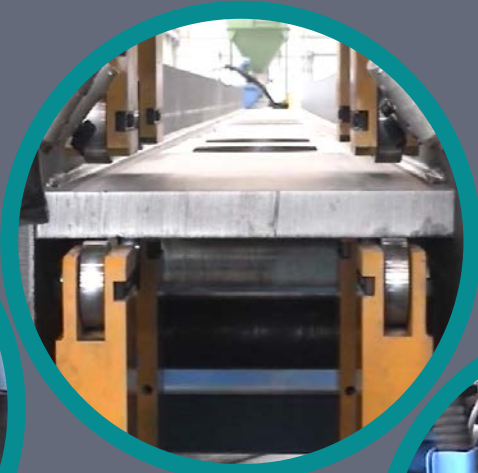
Rounding and Grinding Machine



The Rounding and Grinding Machine is designed for Round Off the Four Sharp Edges of the Plates and Clean both Sides of the Plates

Specifications		min	max
Plates width	mm	300	2000
Plates thickness	mm	8	50
Length	mm	3000	30000

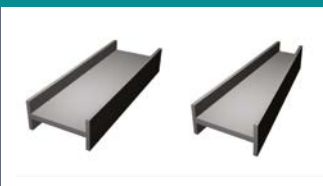
H-Master Line with Web in Flat Position



NUOVACMM
welding automation

34

Type of Beams



Specifications		min	max
Web height	mm	200	2500
Web thickness	mm	6	30
Flange width	mm	200	800
Flange thickness	mm	6	50
Weight	Kg/m		1500
Length	mm	4000	20000

Panel Lines for Shipbuilding Industry





NUOVACMM
welding automation

since 1974

STADLERS CORP FZE

P.O. Box 42081

Sharjah - United Arab Emirates

Tel: +97142382844

Fax: +97142382855

Email: info@stadlerscorp.com

Web: www.stadlerscorp.com